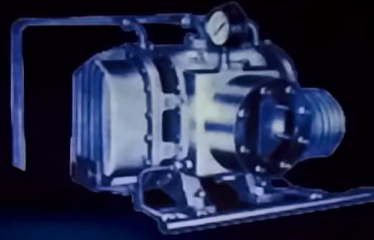




# Shree **BHAVANI** ENGINEERS



**Manufactures & Suppliers Of :**  
**Twin Lobe Air Compressors & Spares**  
**Water Cooled Air Compressor**  
**Water-ring Vacuum Pumps & Spares**

H.O. & Works : 62, Mahalaxmi Industrial Estate, Nr. Hanuman Gali, Bombay Conductor Road,  
Vatva GIDC, Ahmedabad-382445 (Gujarat) Mob. 09925604899 | 08733938011 | 09033198751  
Email : shreebhavanieng2016@gmail.com | parmarlaxman715@gmail.com  
Website : [www.shreebhavaniengineers.com](http://www.shreebhavaniengineers.com)



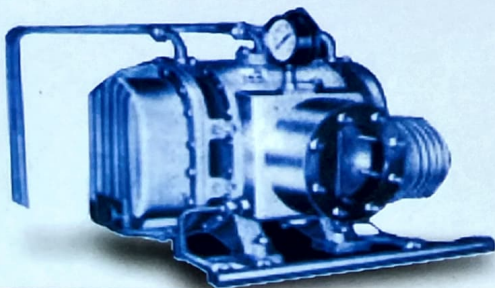
**TWIN LOBE AIR COOLED COMPRESSORS (SBR Series)**

Ap mbar		100		200		300		400		500		600		700		800		900		1000	
MODEL	RPM	CMH	KW	CMH	KW	CMH	KW	CMH	KW	CMH	KW	CMH	KW	CMH	KW	CMH	KW	CMH	KW	CMH	KW
SBR-10	1196	72	0.32	57	0.65	46	0.97	36	1.29	28	1.61	-	-	-	-	-	-	-	-	-	-
	2391	185	0.65	170	1.29	158	1.93	149	2.57	141	3.22	133	3.86	126	4.50	120	5.15	114	5.79	-	-
SBR-12	1073	113	0.47	93	0.93	78	1.40	66	1.86	55	2.33	45	2.80	-	-	-	-	-	-	-	-
	2391	312	1.04	292	2.08	277	3.11	265	4.15	254	5.19	244	6.23	235	7.26	227	8.30	219	9.34	-	-
SBR-14	965	144	0.57	121	1.14	13	1.71	88	2.28	75	2.85	63	3.42	-	-	-	-	-	-	-	-
	2239	406	1.32	383	2.64	365	3.97	350	5.29	337	6.61	325	7.93	314	9.25	304	10.6	294	11.9	285	13.2
SBR-16	849	201	0.78	171	1.55	148	2.32	128	3.10	111	3.87	95	4.65	-	-	-	-	-	-	-	-
	2239	643	2.04	613	4.08	590	6.12	570	8.17	553	10.2	537	12.3	522	14.3	509	16.4	496	18.4	484	20.4
SBR-19	817	313	1.14	275	2.27	244	3.40	218	4.54	194	5.67	173	6.81	153	7.94	-	-	-	-	-	-
	2203	987	3.06	948	6.12	918	9.17	891	12.3	868	15.3	847	18.4	827	21.4	809	24.5	791	27.5	774	30.3
SBR-22	830	559	1.91	507	3.81	464	5.71	428	7.62	395	9.52	365	11.5	337	13.4	-	-	-	-	-	-
	1935	1447	4.44	1394	8.88	1352	13.3	1315	17.8	1282	22.2	1252	26.7	1244	31.1	1197	35.5	1172	40.0	1148	44.4
SBR-26	765	829	2.80	760	5.59	705	8.38	657	11.2	615	1.8	576	16.8	540	19.6	-	-	-	-	-	-
	1620	1920	5.92	1851	11.9	1796	17.8	1748	23.7	1706	29.6	1667	35.5	1631	41.1	1597	47.4	1565	53.3	1353	59.2
SBR-30	606	1060	3.67	970	7.25	900	10.9	840	14.5	786	18.1	738	21.8	693	25.4	-	-	-	-	-	-
	1450	2817	8.67	2727	17.4	2656	26.0	2596	34.7	2543	43.4	2494	52.0	2449	60.7	2407	69.4	2367	78.0	2329	86.7
SBR-36	606	1913	6.28	1783	12.6	1681	18.9	1594	25.2	1516	31.4	1445	37.7	1379	44.0	1317	50.3	1259	56.6	-	-
	1366	4664	14.2	4535	28.4	4443	42.5	4346	56.7	4268	70.8	4197	85.0	4131	99.2	4069	114	4011	128	3956	142

**TWIN LOBE AIR COOLED COMPRESSORS (LR Series)**

MODEL	100		200		300		400		500	
	CMH	HP	CMH	HP	CMH	HP	CMH	HP	CMH	HP
LR-40	202	1.4	182	2.4	164	3.4	149	4.4	137	5.4
	460	2.7	440	4.6	422	6.6	406	8.5	392	10.5
	542	3.1	522	5.3	504	7.6	488	9.8	475	12.1
LR-60	720	4	685	7.2	658	10.3	638	13.4	624	16.5
	1028	6	993	10.2	966	14.3	946	18.4	932	22.6
	1200	6.9	1165	11.7	1138	16.4	1118	21.0	1104	35.8
LR-50	1500	7.5	1450	14	1410	20.5	1380	27	1360	33.5
	2300	13	2250	22	2210	31	2180	40	2160	49
	3230	18	3180	30.5	314	43	3110	55.5	3090	68
LR-300	2940	16	2840	28	2760	40	2695	52	2640	64
	4080	24	3980	40	3900	57	3835	73	3780	89
	6220	34	6120	58	6040	82	5975	106	5920	129

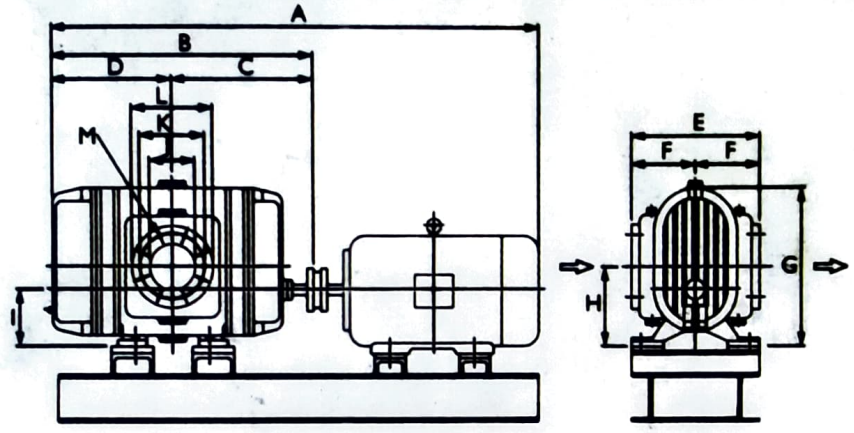
**WATER COOLED AIR COMPRESSORS (LRP Series)**



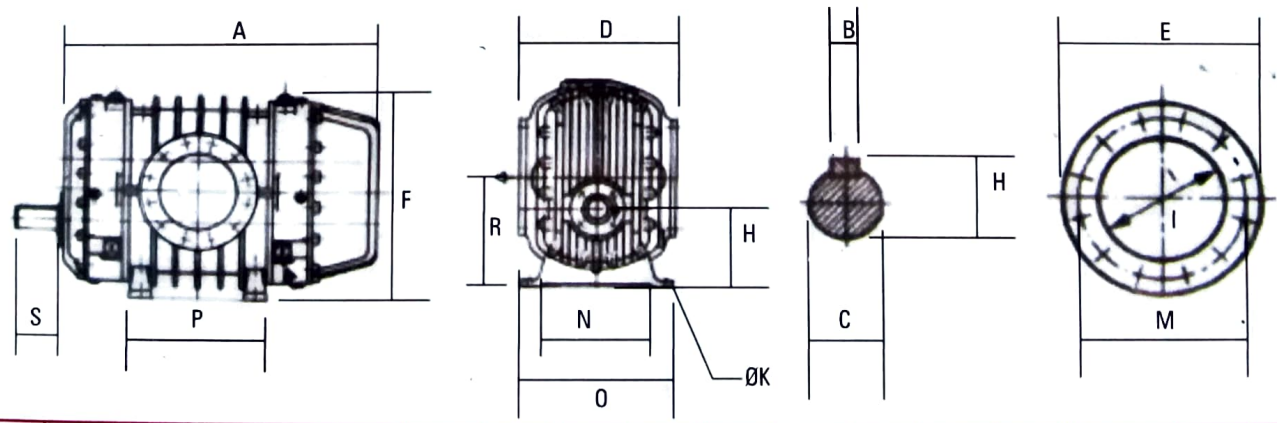
MODEL	RPM	600		700		800		900		1000	
		CMH	HP	CMH	HP	CMH	HP	CMH	HP	CMH	HP
LRP-40	1450	126	6.5	124	7.5	122	8.5	120	9.5	118	10.5
	2850	367	12.6	362	14.5	358	16.3	354	18.3	350	20.4
LRP-60	1450	580	20	570	23	560	26	555	29	550	32
	2000	870	27	860	31	850	35	840	39	835	43
LRP-150	980	1270	40	1250	46	1230	53	1220	59	1210	65
	1450	2010	60	1980	69	1960	78	1940	87	1920	96
LRP-300	725	2500	78	2450	90	2400	102	2360	114	2320	125
	980	3570	107	3520	123	3480	139	3440	155	3410	170

### Compressors Dimensions ( All Dimensions in mm)

These are Positive Displacement Twin lobe Compressors suitable for a wide range of operating speeds to meet the exact capacity requirement of the application they can be offered for pressures in single stage up to 1 Kg/cm<sup>2</sup>.



TYPE	PIPE SIZE SUCTION	DELIVERY	A	B	C	D	E	F	G	H	I	J	K	L	M
LRP-40	100	100	1200	650	350	300	360	180	350	188	140	100	170	210	4xM 16
LRP-60	150	125	1720	865	480	385	400	200	462	252	185	150	225	265	8xM 16
LRP-150	225	200	2150	1050	570	480	600	300	644	342	240	225	305	345	8xM 16
LRP-400	300	250	2700	1425	780	645	800	400	839	446	310	300	395	440	12xM 20



TYPE	A	D	F	H	ØK	N	O	P	R	S	B	H	C	I	M	N	E
LCR-10	514	224	274	112	14	180	220	100	150	60	8	28	25	70	4xM 12	130	160
LCR-12	604	264	320	132	14	205	240	120	176	80	8	33	30	80	4xM 16	150	190
LCR-14	644	280	337	132	18	220	260	140	196	80	10	38.5	35	100	4xM 16	170	210
LCR-16	707	320	400	160	18	260	300	170	234	80	10	41.5	38	125	4xM 16	200	240
LCR-19	820	360	448	180	18	300	340	200	268	110	12	45.5	42	150	4xM 16	225	265
LCR-22	905	400	508	200	18	340	380	240	315	110	14	52	48	175	4xM 16	255	295
LCR-26	1010	450	595	225	18	380	430	295	370	140	18	65	60	200	4xM 16	280	320
LCR-30	1165	500	675	250	22	430	480	360	445	140	20	74.5	70	250	12xM 16	335	375
LCR-36	1330	630	770	280	22	520	580	440	540	170	22	85	80	300	12xM 20	395	440

## WATER RING VACUUM PUMP



TYPE	SPEED RPM	MAX SUCTION CAPACITY M/HR	WHIGHT KG.	WHIGHT KG.	WHIGHT KG.
LWV-4	2850	49	3	7	35
LWV-7	2850	81	5	9	42
LWV-12	2850	123	7.5	14	53
LWV-15	1450	160	7.5	16	172
LWV-20	1450	220	10.0	20	186
LWV-30	1450	330	15.0	30	222
LWV-40	1450	440	20.0	40	245
LWV-60	980	725	30.2	60	496
LWV-100	980	1080	40.0	100	532
LWV-150	725	1500	65.0	150	912

### APPLICATIONS

Applications for **ROTARY POSITIVE DISPLACEMENT TWIN LOB COMPRESSORS** are many varied. Following are few important ones.

CEMENT PLANT, CEMENT BLENDING, BLENDING, AERATION FLUIDIZATION.

STEEL PLANTS COKE OVEN GAS, LIME KILNBED COAL WASHERY

WATER TREATMENT PLANTS : Demineralization, Supply of Air for the bak cleaning of filters.

SEWAGW PLANTS : Aeration Air is required to keep beneficial alive in the activated sludge Process.

SUGAR PLANTS : Sulphitation Process

TEXTILE MILLS : Humidification Beam Dying.

PNEUMATIC CONVEYING : Material handle include flour, Sugar, Salt Cement Coal Plastic Chips & Wood Chips.

CHEMICALS : Transport of Gases

ICE FACTORIES GLASS INDUSTRY For interal Pressures.

BLUB INDUSTRIES

BREWERY FOR COMPRESSED AIR

GAS GENERATORS

BLUK TRANSPORT VEHICLES : Air is used for the Pneumatic discharges of Vehicle Carrying Powdered & Granular material.

**NOTE** : it can works as VACCUM PUMP also